

2021 CLASS A DIESEL | PACE ARROW LXE

FleetwoodRV



PACE ARROW LXE

2021 CLASS A DIESEL





Fleetwood RV and Freightliner Custom Chassis have teamed up to bring you the ultimate in luxury, power and performance. Introducing the newly re-engineered Freedom Bridge® foundation.

Freedom Bridge foundation combines the unrivaled strength and storage capacity of Fleetwood RV's exclusive modular design with the high-performance innovation of a Freightliner chassis—all backed by the nation's largest service support network. The new Freedom Bridge® brings performance and peace of mind together, perfectly.

Freedom Bridge XCM is the foundation for Pace Arrow LXE model.



DriveTech rolls together FCCC's latest innovations—like the OptiView all-digital LCD dash display and FCCC's all-new ergonomic steering wheel and column-mounted controls—into one comfortable, easy-to-use driver console.



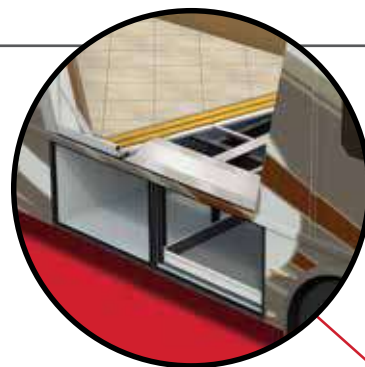
INTRODUCING DRIVETECH—the most advanced display and control system in the RV industry. DriveTech is the first RV driving system to prioritize safety by putting every command in one easy-to-reach location. The all-new ergonomic steering wheel and column-mounted controls are paired with OptiView's all-digital gauge display to create a more automotive-like feel and set the industry standard for luxury RV driving. And it's only from Freightliner Custom Chassis.

PRIORITIZING DRIVER SAFETY A recent study reported that 80% of collisions and 65% of near collisions involved some form of driver distraction, often from using electronic devices while driving. DriveTech prioritizes driver safety by streamlining and simplifying controls to help drivers focus their full attention on maneuvering and piloting the coach.

CONNECTING WITH RV DRIVER EXPECTATIONS The world is changing. By 2020, more than 90% of cars sold will be connected—equipped with Internet access and a wireless network to share data with devices both inside and outside the vehicle. DriveTech updates the RV driver's station to align with that of the automotive industry, delivering the luxury experience modern drivers expect.



Rated up to 24,000 lbs., V-Ride allows for more luxury amenities, additional cargo capacity and superior roll stability.



Wedge Tank Design: Wedge-shaped holding tanks ensure thorough drainage of black and grey water.



Increased Storage: Oversized pass-through storage re-engineered with slide rails integrated into the floor, creating more storage space and easier access.



OptiView is the RV industry's first LED instrument cluster, featuring bright, clear graphics, colors and menus. Bluetooth® connectivity and on-demand operation add convenience and control.



DriveTech's ergonomically-designed steering wheel and easy-to-reach, column-mounted controls turn piloting your RV into a driver-friendly automotive experience.



Huckbolts: Aerospace-grade, vibration-resistant fasteners for unrivaled strength and reliability.

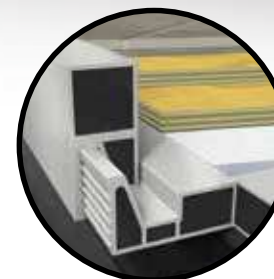
RV OWNERCARE

Limited one-year/15,000-mile coach warranty and three-year/45,000-mile structural warranty, whichever occurs first, and it is fully transferable for the first 12 months. RV OWNERCARE is one of the RV industry's most comprehensive programs and includes systems, appliances, components and construction, with no deductible and no service charge.

Chassis Warranty provided by Freightliner Custom Chassis Corporation®



Maximized Flooring Strength: Double-thick flooring effectively deadens exterior noise and increases durability.



ADDITIONAL FEATURES

A Premium SACHS® Shocks increase comfort, safety and dependability. **B I-Beam Construction** achieves a torsion rating that is 30% higher than the competition. **C Dual-Side Fuel Fills** provide high-flow access to the 100-gallon fuel tank from either side of the RV. **D Impressive Towing Capacity** with integrated receiver hitch ratings of 10,000 lbs. and 15,000 lbs., offering a wide range of towing capabilities.* **E Central Protective Raceway** houses air, hydraulic and electrical lines while providing easy access. **F Michelin® Tires w/Polished Aluminum Wheels** give you on-the-road performance and let you arrive in style.



HITTING THE TARGET ON EVERY LEVEL.

We've stacked the Pace Arrow LXE with everything you're looking for in a motorhome. Each floorplan features an articulating king size bed and a living room fireplace. There are also plenty of bathroom options, including two full or 1.5 baths. And even in the one bath models, there are double sinks to make getting ready easier. No matter what, everyone will always have hot water with the on-demand system.

Enjoy a stable and luxurious ride on the 275/80R 22.5-inch Michelin® tires, and reduce gas station stops with the 100-gallon fuel tank. Relax in style with the Apex residential-style furniture and the Roadwire power cockpit seats. The newly-designed front cap sets off the exterior's look but also includes practical features like generator access.

Take aim at your dreams. The Pace Arrow LXE will get you there.

PACE ARROW LXE 38F

Shown in Alloy Decor with Heritage Cabinetry





PACE ARROW LXE 38F
Shown in Alloy Decor with Heritage Cabinetry



1



2



4



5



6



7



8



9

1 Free-standing dinette with credenza standard on 37R and 38F, optional on 38K and 38N

2 Pace Arrow LXE 38F full-size pull-out drawers pantry for all the essentials and more

3 Stylish manual MCD linen look shades with black night roller shades throughout

4 U-shape bench dinette with drawers standard on the Pace LXE 38K and also converts to a sleeping area to accommodate additional guests

5 Residential style kitchen with all the amenities of home and stylish tile backsplash

6 In-the door refrigerator water and ice

7 Pace Arrow LXE 37R offers this free standing recliner which sits next to the electric fireplace to keep you warm on those evening when you stay in to watch a movie

8 All Pace Arrow LXE floorplans come standard with an electric fireplace

9 Expansive galley cooking solid countertop area with an induction cooktop, stainless steel sink has inserts to allow more surface prep space



- 1** Kitchen hardwood cabinetry has galley slide for additional work space or prep area
- 2** Several storage drawer options in the kitchen prep area hardwood cabinetry

- 3** Passenger chair is ultra-leather with reclining back, swivel and six-way power controls and footrest along with 3-point seatbelts and adjustable straps

- 4** Electric fireplace on all floorplans
- 5** 82" Sofa sleeper giving additional space to sleep up to 6

- 6** Pace LXE 38F features a loaded pantry and drawer set-up
- 7** Well-thought out residential amenities throughout for the ideal home feeling

PACE ARROW LXE 38K

Shown in Mystic Decor with Cappuccino Cabinetry





PACE ARROW LXE 38F
Shown in Alloy Decor with Heritage Cabinetry



1



2



3



4



5



6



7



8

1 Optional Hide-A-Loft™

2 Conveniently located next to the refrigerator is the full-sized pantry with pull-out shelves on the Pace Arrow 38K

3 Spa-like master lavy with large vanity area and tons of deep storage shelves

4 Pace Arrow LXE 38F offers deep headboard storage and when closed serves as an extra shelf or nightstand area

5 Every Pace Arrow LXE comes standard with a washer and dryer

6 Pace LXE 38K boasts a full-length wardrobe with mirrors and tons of storage with chest of drawers and a LED TV

7 Pace LXE 38F boasts a full wall wardrobe with storage and a chest of deep drawers

8 Pace Arrow 38F features His and Her's sinks and vanity area



1



2



3



4



5



6



1 Deep overhead storage

2 Fiberglass full-sized shower with clear glass door and skylight

3 Pace Arrow LXE 38N comes standard with bunk beds that convert into a full-sized wardrobe area when not in use and can be closed off with attractive barn doors

4 Free standing recliner standard on the Pace Arrow LXE 37R floorplan

5 78" Sofa sleeper with pull-out queen sized bed for additional guests

6 Optional dishwasher available

PACE ARROW LXE 38K

Shown in Mystic Decor with Cappuccino Cabinetry



PACE ARROW LXE 
INTERIOR DESIGNER RECOMMENDS:

- Alloy Decor with Heritage or Greystone Cabinetry
- Mystic Decor with Heritage or Greystone Cabinetry
- Vapor Decor with Cappuccino or Oxford Cabinetry

Create a customized look that reflects your personal style.



EXTERIOR GRAPHICS — Premium Four Color, Full Body Paint



BATTLESHIP



BLACK SILVER
(BASE)



BRIGHT SILVER



GUNPOWDER GREY



NEWPORT BLUE



CADET



POLAR SILVER
(BASE)



SMOKE



WARM GRAPHITE



CHESTNUT



CORONADO



OXFORD WHITE
(BASE)



BRIGHT SILVER



WARM GRAPHITE



DARK CHERRY



OBSIDIAN



OXFORD WHITE
(BASE)



BRIGHT SILVER



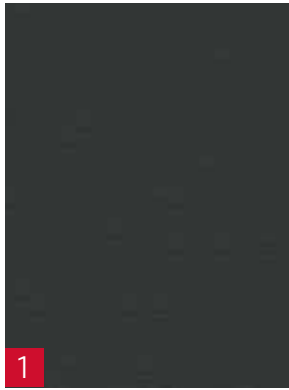
BLACK SILVER



IRON GREY

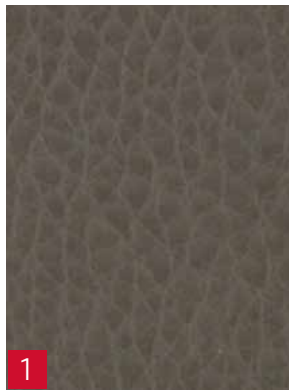
INTERIOR DECOR

ALLOY



CAPPUCCINO

MYSTIC



GREYSTONE

VAPOR

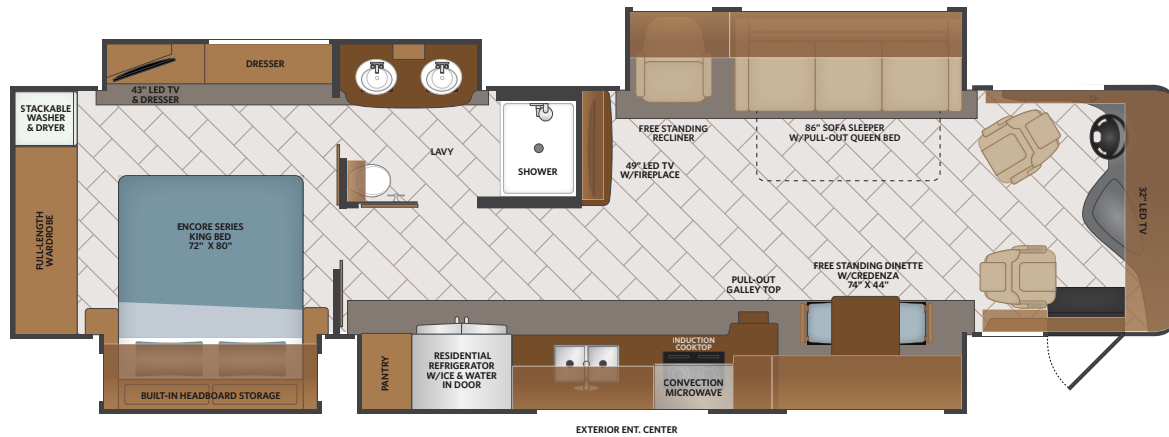
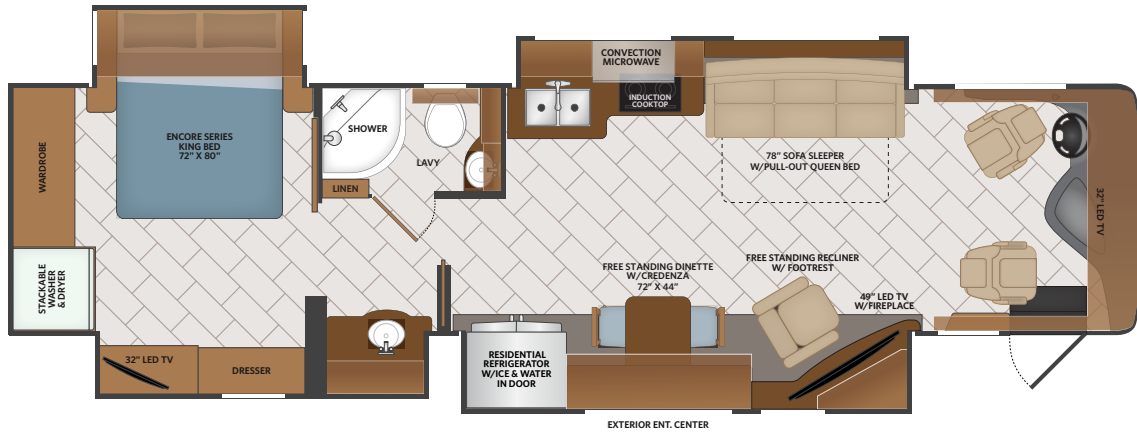


HERITAGE



OXFORD

- 1 SOFA
- 2 LIVING ACCENT
- 3 BEDSPREAD
- 4 COUNTERTOP
- 5 FLOORING
- 6 BACKPLASH
- 7 VALANCE



37R

Options: 099, 209, 217, 237, 563, 830

TOP FLOORPLAN FEATURES

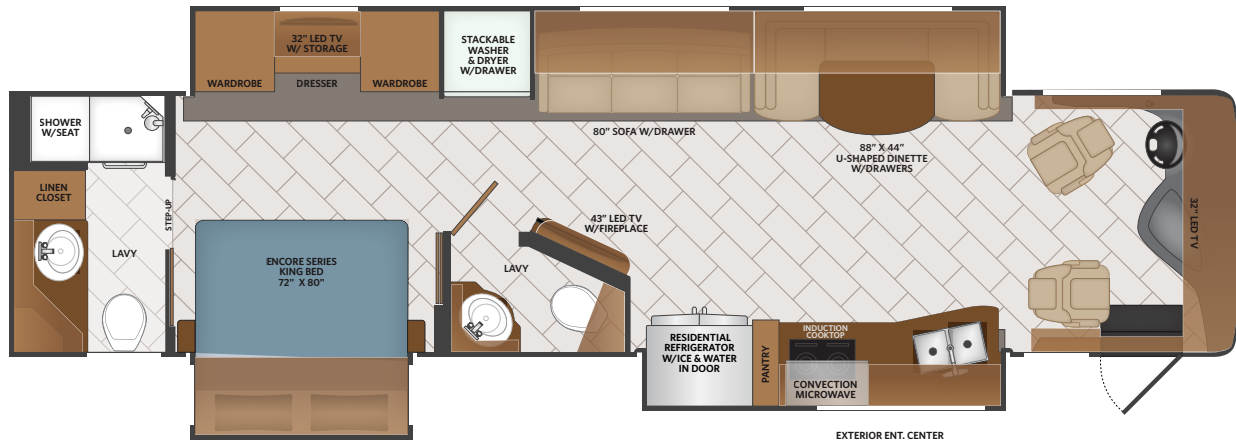
- Sleeps 4 up to 6
- Dual Dash Monitors
- Glass Tile Galley Backsplash
- Fiberglass Shower w/Clear Door
- Stackable Washer/Dryer

38F

Options: 099, 217, 237, 563, 830

TOP FLOORPLAN FEATURES

- Sleeps 4 up to 7
- Spacious Living Area
- Power Driver/Passenger Seats
- Free Standing Dinette w/Credenza
- Pull-out Galley Top
- Full-length Wardrobe

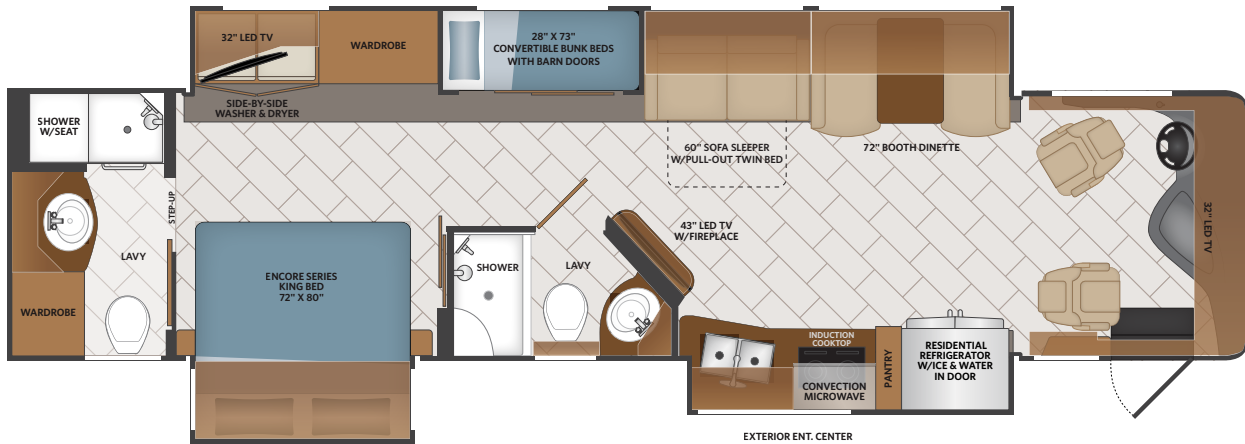


38K

Options: 099, 209, 217, 237, 563, 833

TOP FLOORPLAN FEATURES

- Sleeps up to 5
- Bath-and-a-half
- Full Wall Slide
- 80" Sofa
- Dual Wardrobes in Bedroom
- Linen Closet in Rear Lavy



38N

Options: 099, 209, 217, 237, 563, 809, 833

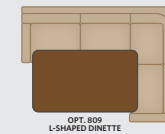
TOP FLOORPLAN FEATURES

- Sleeps up to 8
- Two Full Baths
- Convertible Bunk Beds with Wardrobe
- Induction Cooktop
- Bedroom 32" LED TV

PACE ARROW LXE OPTIONS

209	Motion Power Lounge
217	Hide-A-Loft™ Drop Down Queen Bed
237	Third Roof AC
563	Technology Package

809	L-Shaped Dinette
830	Facing Dinette
833	Free Standing Dinette w/Credenza



PACE ARROW LXE

EXTERIOR	37R	38F	38K	38N
4-Color Premier Full-Body Paint	S	S	S	S
Fiberglass Wheel Well Trims	S	S	S	S
TPO Roof: Thermoplastic Polyolefin	S	S	S	S
Awning: Electric Patio Awning w/ LED Lighting and Wind Sensor Retract	S	S	S	S
Power Entry Awning w/LED Lighting	S	S	S	S
Slideout Awning Toppers above all Slideouts, Dometic	S	S	S	S
Radius Trimmed Entry Door w/ Black Interior, Black Screen Door, Rotary Latch, Deadbolt Lock, and Window	S	S	S	S
Acrylic Lighted Grab Handle at Entry Door	S	S	S	S
Side-Swing Aluminum Bus-Style Baggage Doors w/Chrome Handles	S	S	S	S
Large Dark-Tinted Frameless Windows	S	S	S	S
LED Patio Lights (One at Door, One on Door Side Slideout)	S	S	S	S
Porch Light w/Interior Switch	S	S	S	S
Automatic Hydraulic Leveling Jacks	S	S	S	S
LED Clearance and Marker Lighting at Front, Side, and Rear	S	S	S	S
Exterior Service Station w/ Water Pump Switch, Exterior Shower, Black Tank Flush, City Water Hook-Up, Towel Holder, Drainage Valves, Water Heater, and Bypass Valve	S	S	S	S
Full-Coach Water Filtration System	S	S	S	S
Exterior Park Cable and Satellite Hook-Up	S	S	S	S
7-Way Round Tow Connection	S	S	S	S
Rear Ladder, Brushed Aluminum Color	S	S	S	S
Front and Rear Mudflaps	S	S	S	S
Rear Underhood Utility Light	S	S	S	S
Antenna: Unidirectional KING® Controls Jack Antenna	S	S	S	S
Basement Storage LED Lighting	S	S	S	S
Heated Holding Tank Compartment	S	S	S	S
Basement Pass-Through Storage	S	S	S	S
KING® Universal Stationary Satellite	S	S	S	S
Full-Bay Slide Trays: 1st Bay Single 90"	S	S	S	S
Roof Vent Rain Covers	S	S	S	S
Exterior Entertainment Center	S	S	S	S

3rd Roof A/C	O	O	O	O
Satellite Delete	O	O	O	O
CAB EXTERIOR	37R	38F	38K	38N
Two-Piece Front Fiberglass Cap	S	S	S	S
One-Piece Rear Cap	S	S	S	S
One Piece Generator Access	S	S	S	S
Automotive-Style One-Piece Windshield	S	S	S	S
Daytime Running Lights	S	S	S	S
Tinted Slider Driver and Passenger Windows	S	S	S	S
Automotive-Style Windshield Wiper System	S	S	S	S
Remote Power and Heated Mirrors w/Turn Signals and Side Cameras, Black	S	S	S	S
Lower Front Protective Mask	S	S	S	S
CAB INTERIOR	37R	38F	38K	38N
Dash Inserts: Driver Instrument Panels	S	S	S	S
Black Instrument Gauges w/Electronic Information Center	S	S	S	S
High-Output Dash Air Conditioning/Heat	S	S	S	S
Air Suspension Deflation System	S	S	S	S
Electronic Cruise Control	S	S	S	S
Windshield Wipers w/Delay	S	S	S	S
Keyless Entry w/Remotes	S	S	S	S
Power and Heated Chrome Mirrors Switch	S	S	S	S
Utility Service Compartment Switch	S	S	S	S
Driver Console w/Lower Storage Bin	S	S	S	S
Power Locks w/Key FOB Control	S	S	S	S
7" Backup Monitor Color	S	S	S	S
SiriusXM® Satellite Radio Ready (Requires Subscription)	S	S	S	S
10.2" Magnadyne® Radio Touch Screen w/AM/FM/CD/DVD/Bluetooth®/Navigation/App Store/WiFi	S	S	S	S
Driver Chair: Ultra Leather w/Reclining Back, Swivel, and 6-Way Power Controls	S	S	S	S
Passenger Chair: Ultra Leather w/Reclining Back, Swivel, 6-Way Power Controls, and Footrest	S	S	S	S
3-Point Driver and Passenger Seatbelts w/ Adjustable Straps	S	S	S	S
12V and USB Accessory Ports	S	S	S	S
110V AC Outlet at Dash and Passenger Area	S	S	S	S
Automotive-Style Wrap-Around Dash	S	S	S	S

Passenger Armrest w/Solid-Surface Top	S	S	S	S
Front Power Roller Shades and Blinds	S	S	S	S
Driver/Passenger Manual Roller Shades and Blinds	S	S	S	S
Radio Switch Main/Auxiliary Power at Dash	S	S	S	S
Additional Battery Disconnect Switch at Dash	S	S	S	S
Momentary Battery Booster Switch: Connecting Chassis and House Batteries	S	S	S	S
Map Lights	S	S	S	S
Driver/Passenger Overhead Storage Cabinetry	S	S	S	S
Air Horns	S	S	S	S
Automatic Leveling Jacks w/Touchpad Controls	S	S	S	S
Power Drop-Down Hide-Away Overhead Bunk w/Mattress	O	O	O	O
INTERIOR	37R	38F	38K	38N
78" Sleeper Sofa w/Queen-Sized Bed	S	—	—	—
86" Sleeper Sofa w/Queen-Sized Bed	—	S	—	—
80" Loveseat w/Storage	—	—	S	—
60" Sleeper Sofa w/Twin-Sized Bed	—	—	—	S
80" Power Motion Lounger	—	—	O	—
60" Power Motion Lounger	—	—	—	O
78" Power Motion Lounger	O	—	—	—
Chair: Recliner w/Swivel and Glide	S	S	—	—
Facing Dinette Booth	O	O	—	S
L-Shape Dinette	—	—	—	O
Free-Standing Dinette w/Credenza	S	S	O	O
U-Shape Dinette	—	—	S	—
Electric Fireplace	S	S	S	S
Interior Flat Soft-Touch Vinyl Ceiling	S	S	S	S
Tile Flooring Throughout	S	S	S	S
Full-Extension Drawer Guides Throughout w/Latches	S	S	S	S
Hidden Hinges Throughout	S	S	S	S
Hardwood Selected Cabinets	S	S	S	S
Hardwood Ceiling Feature Trim w/Lighting	S	S	S	S
Coordinating Valance w/Lambrequins	S	S	S	S
Front, Driver, and Passenger Manual Day/Night Roller Shades, Black/Black	S	S	S	S
Manual Day and Night Roller Shades Throughout, Black	S	S	S	S

110V and USB Ports Throughout	S	S	S	S
Energy-Efficient LED 3" Puck Flush-Mounted Ceiling and Accent Wall Lighting	S	S	S	S
Washer and Dryer	S	S	S	S
Accent Rope Lighting (Tops, Living Slideout Trims, and New Ceiling Trim)	S	S	S	S
INTERIOR ENTRY	37R	38F	38K	38N
Power Entry Step Cover	S	S	S	S
Solid-Surface Entry Step w/LED Accent Lighting	S	S	S	S
Battery Disconnect at Passenger Cabinet	S	S	S	S
Metal Interior Grab Handle at Entry	S	S	S	S
Entry Door Manual Roller Shades and Blinds	S	S	S	S
Lighted Step Well	S	S	S	S
Automatic Entrance Steps	S	S	S	S
KITCHEN	37R	38F	38K	38N
Refrigerator: 21 cu.ft. Side-by-Side Refrigerator w/Exterior Ice and Water Dispenser, 36" Wide Counter Depth	S	S	S	S
2-Burner High-Output Induction Electric Cooktop	S	S	S	S
Stainless Steel Over-the-Range 1000W Convection Microwave	S	S	S	S
Polished Solid-Surface Galley Countertop w/Lighting	S	S	S	S
Shadow Box Glass Tile Backsplash w/Window and Shade	S	S	S	S
Deep Stainless Steel Sink	S	S	S	S
Polished Solid-Surface Sink Covers	S	S	S	S
Residential Single-Handled Faucet w/Pull-Out Sprayer	S	S	S	S
Adjustable Shelves Throughout Kitchen	S	S	S	S
Full-Extension Drawer Guides w/Latches	S	S	S	S
Fan-Tastic® Power Vent w/Wall Switch	S	S	S	S
Wastebasket	S	S	S	S
Pantry w/Hardwood Finished Fronts	S	S	S	S
Dishwasher	O	O	O	O
BEDROOM OR BUNK AREA	37R	38F	38K	38N
King-Sized Dreameasy® Serenity Memory Foam Mattress w/Adjustable Head	S	S	S	S
28" x 73" Bunk Beds w/5" Foam Mattress	—	—	—	S
Designer Bedspread, Pillow Shams, and Pillows	S	S	S	S
Headboard	S	S	S	S
Coordinating Fabric Window Treatments and Lambrequins	S	S	S	S

Remote Generator Start Switch	S	S	S	S
Surf(x)® Bedroom Tops	S	S	S	S
Hardwood Raised-Panel Doors	S	S	S	S
Hardwood Cabinet Wardrobe Doors w/Mirrors	S	S	S	S
Cedar-Lined Rear Wardrobe Closet	S	S	S	S
Dual Rear Wardrobe w/Hinges and Rods	S	—	S	S
Full Rear Wardrobe w/ Hinges and Rod	—	S	—	—
Bunk Bed Barn Door	—	—	—	S
USB in Nightstands	S	S	S	S
Individual Reading Lights in Bedroom Overhead	S	S	S	S
BATHROOM	37R	38F	38K	38N
Polished Solid-Surface Bathroom Countertop	S	S	S	S
Polished Solid-Surface Bathroom Shelf	—	—	S	S
Tile Backsplash	S	S	S	S
Gemstone Undermount Sink	S	S	S	S
Residential Chrome Faucet w/Double Faucet	S	S	S	S
Deluxe Hardwood Medicine Cabinet w/Mirror	S	S	S	S
Hardwood Raised-Panel Doors	S	S	S	S
Fiberglass Colored Shower Pan and Surround	S	S	S	S
Glass Shower Door, Clear	S	S	S	S
Shower Skylight	S	S	S	S
Brushed-Nickel Shower Head w/On/Off, Sliding Adjustable Bar, Soap Dish, and Matching Single-Valve Faucet	S	S	S	S
Porcelain Macerator Foot-Flush Toilet w/Water Saver	S	S	S	S
Porcelain Foot-Flush Toilet w/Water Saver	—	—	S	S
Fan-Tastic® Power Vent w/Wall Switch	S	S	S	S
Hardwood Window Treatment	S	S	S	S
Manual Night Roller Shade, Black	S	S	S	S
Accessories: Dual Towel Rings and Toilet Paper Holder	S	S	S	S
ENTERTAINMENT	37R	38F	38K	38N
LG® 32" Flat Screen LED TV (Bedroom)	S	—	S	S
LG® 43" Flat Screen LED TV (Bedroom)	—	S	—	—
LG® 43" Flat Screen LED TV (Living Area)	—	—	S	S
LG® 49" Flat Screen LED TV (Living Area)	S	S	—	—
JBL® Soundbar TV Sound System (Living Area)	S	S	S	S
Blu-Ray® Player w/Remote	S	S	S	S

LG® 32" Flat Screen LED TV (Front Overhead)	S	S	S	S
Exterior Entertainment: 43" TV and Soundbar w/Bluetooth®	S	S	S	S
Two (2) LED TV/DVD Combo Units in Bunk Bed Area	—	—	—	S
ELECTRIC AND UTILITIES	37R	38F	38K	38N
A/C: (2) Roof-Mounted High-Efficiency Ducted 15,000 BTU w/Chill Grill and Rear Heat Pump	S	S	S	S
25,000/25,000 BTU Furnace	S	—	—	—
30,000/25,000 BTU Furnace	—	S	S	S
Precision Circuits Multiplex Wiring	S	S	S	S
Service: 50-Amp, 120V Service Panel	S	S	S	S
Converter: 60 Amp Power Converter w/Precision Circuits	S	S	S	S
Inverter: Single 2000W Pure Sine w/Remote, Magnum	S	S	S	S
Energy Management System (EMS) w/Soft Start and Precision Circuits	S	S	S	S
Neutral Loss Protection	S	S	S	S
Generator: 8kW Onan Quiet Diesel	S	S	S	S
Generator Automatic Changeover	S	S	S	S
Automatic Generator Start	S	S	S	S
Batteries: (4) 6V Deep Cycle House Batteries	S	S	S	S
Water Pump: 12V 3GPM High-Capacity SHURflo® Water Pump	S	S	S	S
Water Purification System (Whole Coach)	S	S	S	S
Black Water Tank Flush	S	S	S	S
Gravity Water Fill DS/RS	S	S	S	S
Cable TV and Satellite Hook-Up	S	S	S	S
Toilet Tank San-T-Flush™ System	S	S	S	S
Touch Sensor Tank Monitoring and Battery Readout	S	S	S	S
Carbon Monoxide and Smoke Detectors, Fire Extinguisher	S	S	S	S
Exterior GFCI Receptacle in Exterior Storage	S	S	S	S
Central Vacuum System	S	S	S	S
Surge Guard Transfer Switch	S	S	S	S
Power Cord Reel	S	S	S	S
100W Solar Panel	S	S	S	S
Technology Package: WiFiRanger™, Cell Booster, 265W Solar Panel, and MobileEye Collision Mitigation	S	S	S	S

**CSA Standards may require substitution or deletion to achieve conformance



PACE ARROW LXE — OUTSTANDING STANDARDS AND OPTIONS



AUTOMOTIVE-INSPIRED DASH
Drive in comfort with an LCD digital dash with steering wheel controls, auto headlights, three-camera backup monitor and 10-inch touchscreen stereo with Bluetooth®, GPS and Sirius XM® Radio capability and dual monitors.



MULTI-PURPOSE CREATIVE FURNITURE
Residential style furniture with creative, functional space saving designs. Offering as much functionality and as many options that are durable, comfortable and stylish for those long trips. Shown is Pace LXE 38K.



TOUCH PAD ELECTRONICS PANEL
Easily operate your RV's systems and accessories with this modern LCD touchscreen control panel and app control.



GENEROUS EXTERIOR STORAGE
Take along more of what you need and bring home more of what you want, with deep, easy-to-clean pass-through compartments.



PANTRY SPACE GALORE
All Pace LXE floorplans have designated pantry space galore with full hardwood pullout drawers. Conveniently located in the galley kitchen area. Shown 38F floorplan.



ON-DEMAND WATER HEATER
Provides continuous hot water. A much more efficient alternative to traditional tank style water heaters.



MASTER BEDROOM SUITE
Masterbed room is standard with a king size Dream Easy Serenity memory foam mattress with adjustable head. Additional USBs located in the nightstands.



HIDE-A-LOFT™ DROP DOWN QUEEN BED
Invite more guests on your road trip without compromising space featuring industry-leading headroom and up to 500 lb. capacity on the optional Hide-a-loft bed. Power drop down capabilities with a LED TV and mattress is included.



DUAL A/C UNITS WITH HEAT PUMP
Stay cool on hot days and warm on cool days with two roof-mounted 15K BTU high-efficiency units are standard. Pace Arrow LXE has the option to upgrade to a third roof A/C for additional cooling power.



TECHNOLOGY PACKAGE INCLUDES:

- WiFiRanger™ Sky4 ProPack w/LTE
- WeBoost Cell Booster
- MobileEye Collision Mitigation
- 265 Watt Solar Panel

PACE ARROW LXE SPECIFICATIONS

CHASSIS	37R	38F	38K	38N
Wheelbase (inches)	245"	263"	252"	252"
Front GAWR (lbs)	12,400	12,400	12,400	12,400
Rear GAWR (lbs)	21,000	21,000	21,000	21,000
GCWR (lbs)	33,000	33,000	33,000	33,000
Hitch Rating Weight (lbs)	10,000	10,000	10,000	10,000
Tongue Weight (lbs)	1,000	1,000	1,000	1,000
Fuel Capacity (gal)	100	100	100	100
DIMENSIONS AND CAPACITIES	37R	38F	38K	38N
Overall Length (inches)	38' 9"	40' 1"	39' 5"	39' 5"
Overall Height (suspension inflated)	12' 10"	12' 10"	12' 10"	12' 10"
Overall Width (maximum)	102"	102"	102"	102"
Interior Height (maximum)	84"	84"	84"	84"
Interior Width (maximum)	96"	96"	96"	96"
Patio Awning Width (ft.)	14' 0"	18' 0"	10' 8"	18' 0"
Interior Storage (cu. ft.)	136	158	148	152
Exterior Storage (cu. ft.)	117	142	127	127
Fresh Water Holding Tank (gal)	105	105	105	105
Grey Water Holding Tank (gal)	75	75	75	75
Black Water Holding Tank (gal)	50	50	50	50
Appliance Propane Tank (gal)	38.7	38.7	38.7	38.7
Tankless Water Heater	S	S	S	S

Product information, photography, illustrations included in this publication were as accurate as possible at the time of printing.



FREEDOM BRIDGE® CHASSIS

Model: Freightliner® XCM Series

Engine: Cummins ISB 6.7L

Transmission: Allison® 2,500 MH 6-Speed w/Electronic Shifter

Alternator: Delcom Remy 160 Amp

Torque: 700 lb.-ft. @ 1,600 RPM

Horsepower: 340HP



DISCLAIMERS

1. GVWR (Gross Vehicle Weight Rating) is the maximum permissible weight of this fully loaded motorhome. The GVWR is equal to or greater than the sum of the (UVW) unloaded vehicle weight plus the (OCCC) occupant cargo-carrying capacity.

2. GAWR (Gross Axle Weight Rating) is the maximum permissible loaded weight a specific axle is designed to carry.

3. GCWR (Gross Combined Weight Rating) is the value specified by the motor home manufacturer as the maximum allowable loaded weight of this motorhome with its towed vehicle. Towing and braking capacities may be different.

Refer to Fleetwood and chassis manufacturer's manuals for complete information.

4. Length measured from front bumper to rear bumper (excludes accessories).

5. Excludes safety equipment and awnings.

6. Motorhomes feature a body width over 96" which will restrict your access to certain roads. Before purchasing, you should research any state and/or province road laws which may affect your usage.

7. Tank manufacturer's listed water capacity (WC). Actual propane capacity is 80% of water listing as required by the safety code.

† The chassis manufacturer recommends the installation of a supplemental brake control system to activate the brakes on the vehicle or trailer you are towing. Hitch receiver ratings expressed are maximum for the hitch receiver installed and may require the purchase of additional equipment that is dependent on the weight of the towed load. Consult with hitch receiver manufacturer for further information.

* UVW and OCCC are found on the label containing the federal certification tag in each RV.



*** All 2021 REV Recreation Group motorhomes include a limited one year/15,000-mile coach warranty and three-year/45,000-mile structural warranty, whichever occurs first, and is fully transferable for the first 12 months.

FLEETWOOD MOTORHOME ASSOCIATION

As a Fleetwood RV owner, you're invited to become a member of the Fleetwood Motorhome Association (FMA).

Becoming a member is the perfect way to meet other Fleetwood owners who love to travel across America and share in the RV lifestyle. Visit the FMA website at www.fma4fun.org to learn more and join the fun.

CONTACT US

To locate a dealer near you, visit our website at www.fleetwoodrv.com or call 1-800-322-8216.

We can also be contacted at Fleetwood RV Customer Relations, P.O. Box 1007, Decatur, IN 46733.

IMPORTANT—PLEASE READ: Product information, photography and illustrations included in this publication were as accurate as possible at the time of printing. For further product information and changes, please visit our website at www.fleetwoodrv.com or contact your local Fleetwood RV dealer. Prices, materials, design and specifications are subject to change without notice. All weights, fuel, liquid capacities and dimensions are approximate. Fleetwood RV has designed its recreational vehicles to provide a variety of uses for its customers. Each vehicle features optimal seating, sleeping, storage and fluid capacities. The user is responsible for selecting the proper combination of loads (i.e., occupants, equipment, fluids, cargo, etc.) to ensure that the vehicle's capacities are not exceeded.

YOUR LOCAL DEALER

Explore Your World Like Never Before



About REV Group, Inc.



REV Group® (REVG) is a leading designer, manufacturer, and distributor of specialty vehicles and related aftermarket parts and services. We serve a diversified customer base, primarily in the United States, through three segments: Fire & Emergency, Commercial, and Recreation. We provide customized vehicle solutions for applications, including essential needs for public services (ambulances, fire apparatus, school buses, and transit buses), commercial infrastructure (terminal trucks and industrial sweepers) and consumer leisure (recreational vehicles). Our diverse portfolio is made up of well-established principal vehicle brands, including many of the most recognizable names within their industry. Several of our brands pioneered their specialty vehicle product categories and date back more than 50 years. REV Group trades on the NYSE under the symbol REVG. Investors-REVG



IMPORTANT—PLEASE READ: Product information, photography and illustrations included in this publication were as accurate as possible at the time of printing. For further product information and changes, please visit our website at www.fleetwoodrv.com or contact your local Fleetwood RV dealer. Prices, materials, design and specifications are subject to change without notice. All weights, fuel, liquid capacities and dimensions are approximate. Fleetwood RV has designed its recreational vehicles to provide a variety of uses for its customers. Each vehicle features optimal seating, sleeping, storage and fluid capacities. The user is responsible for selecting the proper combination of loads (i.e., occupants, equipment, fluids, cargo, etc.) to ensure that the vehicle's capacities are not exceeded.

FleetwoodRV.com

©2020 REV Group, Inc. Printed in the USA. 11/20. Model Year 2021, First Edition.

Part #: L93-0021-21



OUR VERY OWN FLEETWOOD RV MOTORHOME SERVICE CENTERS

At Fleetwood RV, we strive to deliver peace-of-mind at every turn. Our devotion to customer service starts with our trusted dealer network and spans to our own staff of motorhome service professionals at REV Recreation Group's regional technical centers. The motorhome service centers are strategically located throughout the United States to provide you convenient service wherever the road takes you.

Below, you'll find the closest motorhome service center, as well as a list of the other centers. Please visit www.fleetwoodrv.com/motorhome-service-centers to schedule a Service Appointment.

East Coast

REV RV SERVICE & REPAIR
800-509-3417

West Coast

REV RV SERVICE & REPAIR
877-466-6226

ROADSIDE ASSISTANCE. ANYWHERE. ANYTIME.

24/7 CUSTOMER SUPPORT FOR:

- FUEL
- BATTERY
- LOCKSMITH
- TOWING
- SLIDE-OUT ISSUES
- AND MUCH MORE!

1-855-268-0414



One-year of REV Assist is free with the purchase of any new 2021 Fleetwood. You may extend your coverage after the first year at www.revgroup.com/rev-assist.