

# 1492

EXPLORE THE ULTIMATE FIFTH WHEEL



VISIT [WWW.PALOMINORV.COM](http://WWW.PALOMINORV.COM) FOR ADDITIONAL PHOTOS AND INFORMATION

## CONSTRUCTION

- 101" wide body
- All welded aluminum frame superstructure
- Drop Frame pass-thru storage compartments
- 5/8 tongue-groove plywood floor
- R40 Residential 5" radius Wood Truss Roof
- 6' 6" height slides (living area slides)
- (5) heat ducts out of traffic areas
- Snap-in ceiling molding-no staples or tape
- 12V heat pads on all holding tanks
- R38 floor insulation
- R40 roof insulation
- R11 sidewall insulation
- Mor/Ryde CRE3000 Suspension system
- Vacuum Bonded Walls
- Lippert Axles
- 16" wheels w/nitro fill tires
- Rear View Camera prep
- Slide Topper Prep

## INTERIOR

- Large frameless tinted windows throughout
- Hidden hinges
- Soft close constructed reinforced doors & drawers with upgraded hardware
- Upgraded crack/mold/mildew-resistant flooring
- Upgrade true solid surface countertops bath/kitchen
- LED lights
- Residential crown molding throughout unit

- Solid Wood Slide Fascia
- Roller day/night shades
- Solid Wood steps
- Central vacuum system
- Large entry closet for jacket & shoe storage

## EXTERIOR

- Slam latches on all storage doors
- Magnetic Compartment Door Holds
- 2-tone aluminum wheels
- 2-tone wheel well skirting
- Painted fiberglass front cap
- Heated utility convenience center
- Black tank flush
- Outside FM/Bluetooth receiver w/ USB port
- Outside shower
- 2-30 lb LP tanks w/auto switch
- Full view entry door w/window and screen door
- Quick battery disconnect
- Power awning w/LED lighting
- 7000 lb axles (all models)
- Crank down spare tire
- Storage rack in front compartment
- Tire pressure monitoring system
- 2" hitch receiver

## FURNITURE

- Power w/USB charging residential theater seating w/storage

- Bi-fold 80" Sleeper sofa (per model)
- Solid Wood entertainment & end table tops
- Residential high end dining chairs w/ storage

## BEDROOM

- 13.5 Coleman Serenity bedroom A/C
- 32" TV Backer and hookups
- Solid Wood dresser top
- Pillow top mattress
- Mirrored sliding closet doors
- High end bedspread & pillows
- Reading Lights with USB Charger
- CPAP Shelves

## APPLIANCES

- Upgrade 8 cu ft refrigerator w/adjustable temp settings and raised panel doors
- Insignia 3 burner gas cooktop
- Insignia 24" Residential oven
- 50" LED TV w/Sound Bar and DVD player
- 10 gallon water heater w/quick recovery
- Washer / dryer prep
- Full system water purifier
- 30" residential microwave
- 15,000 BTU Coleman Serenity A/C
- 35,000 BTU furnace
- Omnidirectional rooftop antenna with 4G LTE/Wifi Prep
- 50 AMP Converter w/ built-in charge wizard

## KITCHEN

- Pull out pantry
- Storage for sink covers (some models)
- Sink covers
- Residential under counter storage
- Residential backsplash
- Additional lighting above sink area
- Large single bowl stainless steel sink
- Single lever faucet w/pull out sprayer
- Trash can w/ dedicated storage (some models)

## BATHROOM

- 60" x 30" one piece fiberglass shower w/ wood flip up seat & built in shelves for toiletries
- Solid surface counter top
- 3 speed power vent
- Porcelain toilet
- Shower Skylight

## OPTIONS

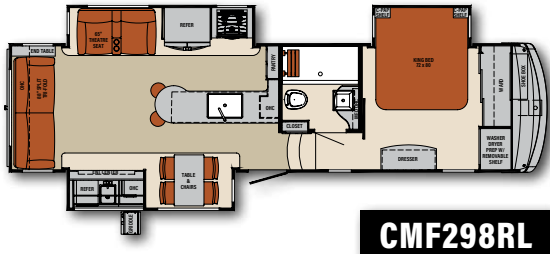
- Stackable washer / dryer
- Dual pane windows
- Full body paint
- 20 cu. ft residential w/1,000W Inverter
- 18 cu ft gas electric refrigerator
- King bed
- Generator prep
- 5/5 generator install (includes gen prep)
- 17.5" Goodyear H rated tires w/upgraded rims

- **1492 package (forced option) includes:** JBL Sound System, Wall Mounted Free Standing Dinette Table w/Extension, Residential Dinette Chairs(2), 2-tone Painted Front Cap, 50" LED TV, Entertainment Bedroom TV, 60x30 Signature Spa Walk-in Shower w/Teak Wood Seat, MCD Day/Night Roller Shades, Memory Foam Mattress, Hybrid Carpet, Aluminum Bed Base, Power Theater Seating w/USB, 50/50 Split Sleeper Sofa, Upgraded Gold Hardware, Deep Bowl Stainless Steel Kitchen Sink, Ceiling Fan in Living Room, Stainless Steel Residential Appliance Package w/20 Cu Ft Residential Refer, Washer/Dryer Prep, Central Vac, Porcelain Toilet w/Foot Flush, Large Kitchen Pantry(select models), Electric Fireplace, Kitchen Maxx Air Vent w/Rain Hood, King Bed, 2 Folding Chairs, Wood Look Linoleum

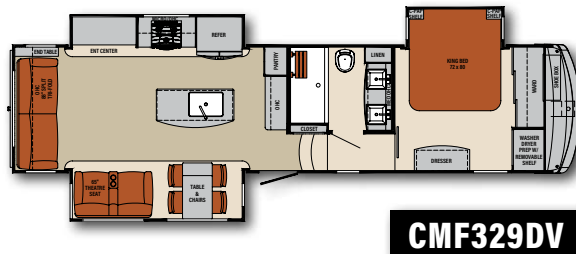
- **Voyager package (forced option) includes:** 6 Point Hydraulic Leveling System, Mor/Ryde CRE/3000 Suspension, 7000 lb Axles, 2-tone Aluminum Wheels, G-rated Tires w/G-rated Spare, Upgraded Pinbox, Tankless Water Heater, Quietcool Serenity A/C 15K BTU main, 13.5 BTU 2nd, Power Cord Reel, 2" Hitch Receiver, Tire Pressure Monitoring System, Frameless Windows, Battery Disconnect, 12V Heat Pads on Tanks, LED Awning Lights, Mor/Ryde Strut Assist Step Above Entry Steps, Syphon 360 Vent Covers, Friction Hinge Entry Door w/Euro Handle, MyRV System, Wifi Booster w/4G LTE Capability, Ladder, LP Quick Connect, Back Up Camera Prep, Slide Topper Prep, Go Power Solar Prep, Metal Wrapped Awning

| SPECIFICATIONS                  | CMF298RL  | CMF329DV  | CMF366RL  | CMF378MB  | CMF382FB     | CMF383FB     | CMF388FK | CMF389FL |
|---------------------------------|-----------|-----------|-----------|-----------|--------------|--------------|----------|----------|
| <b>HITCH WEIGHT</b>             | 2,309     | 2,035     | 1,913     | 2,251     | 2,490        | 2,632        | 2,350    | 2,751    |
| <b>UVW</b>                      | 11,859    | 11,962    | 12,196    | 13,828    | 12,964       | 13,164       | 13,709   | 13,593   |
| <b>GVWR</b>                     | 14,859    | 14,962    | 15,913    | 16,251    | 16,150       | 16,164       | 16,709   | 16,593   |
| <b>CCC</b>                      | 3,000     | 3,000     | 3,717     | 2,423     | 3,186        | 3,000        | 3,000    | 3,000    |
| <b>OVERALL LENGTH</b>           | 35' 5"    | 37' 6"    | 38' 9"    | 41' 2"    | 41' 2"       | 41' 2"       | 41' 2"   | 41' 2"   |
| <b>EXT. HEIGHT (w/o 2nd AC)</b> | 13' 6"    | 13' 6"    | 13' 6"    | 13' 6"    | 13' 6"       | 13' 6"       | 13' 6"   | 13' 6"   |
| <b>EXT. WIDTH</b>               | 101"      | 101"      | 101"      | 101"      | 101"         | 101"         | 101"     | 101"     |
| <b>FRESH WATER (gal.)</b>       | 75 gal    | 75 gal    | 75 gal    | 75 gal    | 75 gal       | 75 gal       | 75 gal   | 75 gal   |
| <b>GREY WATER (gal.)</b>        | 78 gal    | 71 gal    | 71 gal    | 71 gal    | 78 gal       | 78 gal       | 75 gal   | 75 gal   |
| <b>BLACK WATER (gal.)</b>       | 39 gal    | 39 gal    | 39 gal    | 39 gal    | 39 gal       | 78gal        | 39 gal   | 39 gal   |
| <b>AWNING SIZE</b>              | 16' & 10' | 17' & 10' | 18' & 11' | 20' & 10' | 12'-9" & 11' | 12'-9" & 11' | 18'-6"   | 20'      |

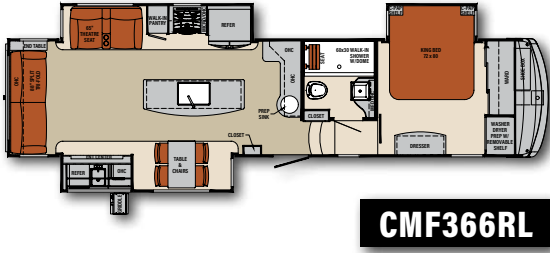
# 1492



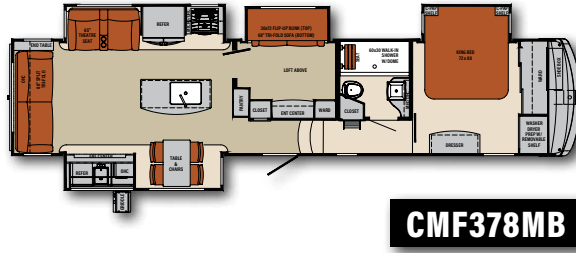
**CMF298RL**



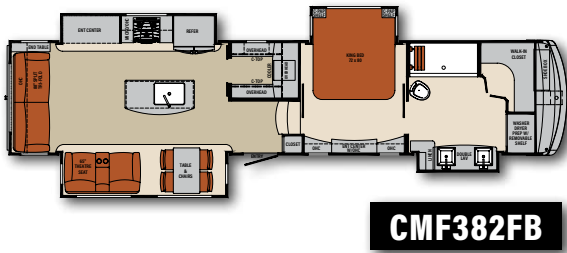
**CMF329DV**



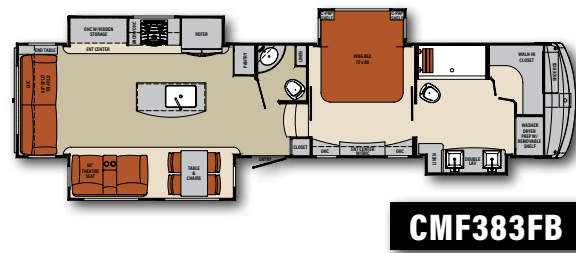
**CMF366RL**



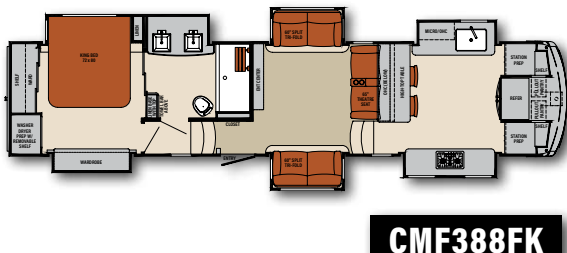
**CMF378MB**



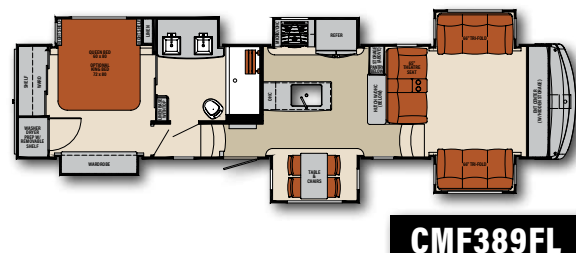
**CMF382FB**



**CMF383FB**



**CMF388FK**



**CMF389FL**





**24/7 EMERGENCY  
ROADSIDE ASSISTANCE  
WITH VEHICLE PURCHASE**

|                 |                         |
|-----------------|-------------------------|
| TOWING          | WINCH-OUT               |
| JUMP-STARTS     | MOBILE MECHANIC         |
| TIRE CHANGES    | TECHNICAL SUPPORT       |
| FLUID DELIVERY  | DEALER LOCATOR SERVICES |
| LOCKOUT SERVICE |                         |

**SAFERIDER RV MOTOR CLUB**

VALID FOR 1 YEAR FROM DATE OF PURCHASE



**PRE-DELIVERY INSPECTION**

20,000 square feet of quality assurance. The bare essentials for a premium product. This state-of-the-art facility gives immediate daily feedback to production for quality assurance in every unit built.



Learn More  
Scan this barcode using a QR Reader on your smart phone to learn more about Forest River.



A Berkshire Hathaway company.

All information contained in this brochure is believed to be accurate at the time of publication. However, during the model year, it may be necessary to make revisions and Forest River, Inc., reserves the right to make all such changes without notice, including prices, colors, materials, equipment and specifications as well as the addition of new models and the discontinuance of models shown in this brochure. Therefore, please consult with your Forest River, Inc., dealer and confirm the existence of any materials, design or specifications that are material to your purchase decision. ©2019 Palomino RV, a Division of Forest River, Inc., a Berkshire Hathaway Company. 10/19 Columbus

**PALOMINO OWNER "DIGITAL KIT" APP**

Now you can have your Owner's Manual with you wherever you are. Download our FREE App from the App Store or Google Play and you'll have the information right at your fingertips.



**FREE MEMBERSHIP**  
to Forest River Owners' Group

www.forestriverfrog.com

**COLUMBUS CARE WARRANTY**

**CUSTOMER SATISFACTION**

**FOREST RIVER**  
encourages you to

**BUY LOCAL**

PREFERENTIAL SERVICE

PRODUCT INFORMATION

www.ForestRiverBuyLocal.com

**PALOMINO**

COLUMBUS BY PALOMINO  
A Division Of Forest River, Inc.  
105-1/2 C.R. 14 • Middlebury, In 46540  
www.palominorv.com

YOUR PALOMINO DEALER: