



**Light
SERIES**

The First Name In Camping

No matter where or why you travel, there's always something to be found, so why not get the most out of every camping experience. Coleman branded floorplans are loaded with added value and innovative features yet light on weight.

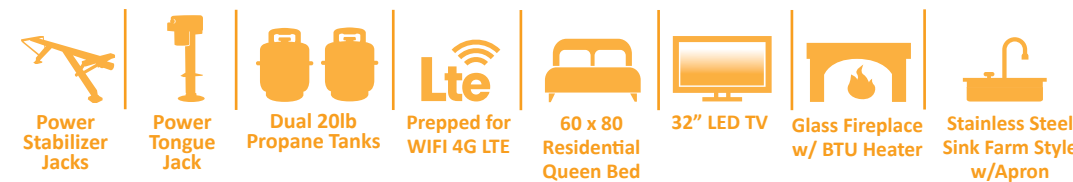
- **Upgraded Kitchen Package** - residential appliances, high rise faucet, stainless steel farm style sink (Light only), pull out kitchen trash can, hidden pantry behind entertainment center (select Light models only).
- **Fully Enclosed Underbelly** - all of your RVs vital functions are kept out of the elements. Plus, this extra layer of protection means you can travel further into the year.
- **Solid Entry Steps** - stability you need when coming and going from your Coleman Light. Easy to expand and store away, these aluminum steps deliver a sound platform.

2755BH



2455BH

Standard Features In Every Light Floor Plan



LIGHT SERIES



LIGHT 1805RB
Length: 22' 9" Weight: 4,503 lbs. Sleeps: 2-4
Hitch: 536 lbs. Height: 10'10"



LIGHT 2425RB
Length: 27' 11" Weight: 5,481 lbs. Sleeps: 2-4
Hitch: 725 lbs. Height: 10'11"



LIGHT 2455BH
Length: 28' 11" Weight: 5,570 lbs. Sleeps: 6-8
Hitch: 662 lbs. Height: 10'11"



LIGHT 2515RL
Length: 29' 5" Weight: 5,704 lbs. Sleeps: 2-4
Hitch: 613 lbs. Height: 10'11"



LIGHT 2625RB
Length: 31' 11" Weight: 6,443 lbs. Sleeps: 4-6
Hitch: 737 lbs. Height: 11'4"



LIGHT 2715RL
Length: 31' 11" Weight: 6,443 lbs. Sleeps: 4-6
Hitch: 737 lbs. Height: 11'4"



LIGHT 2755BH
Length: 31' 11" Weight: 6,528 lbs. Sleeps: 6-8
Hitch: 790 lbs. Height: 11'0"



LIGHT 2835BH
Length: 32' 11" Weight: 6,530 lbs. Sleeps: 6-8
Hitch: 790 lbs. Height: 10'11"



LIGHT 2825RK
Length: 32' 11" Weight: 6,624 lbs. Sleeps: 2-4
Hitch: 848 lbs. Height: 11'0"



LIGHT 2955RL
Length: 33' 11" Weight: 7,290 lbs. Sleeps: 4-6
Hitch: 1,042 lbs. Height: 11'3"



LIGHT 3055BS
Length: 34' 11" Weight: 7,346 lbs. Sleeps: 2-4
Hitch: 870 lbs. Height: 11' 5"



LIGHT 3215BH
Length: 33' 10" Weight: 7,718 lbs. Sleeps: 6-8
Hitch: 1,092 lbs. Height: 11'3"

EXTERIOR (Light Models Only)

- Backup Camera Prep
- Mega Pass Thru Storage Compartment w/ Magnetic Holder & Slam Latch Doors
- Solar Power Prep
- Diamond Plate Rock Guard
- Power Awning w/LED Light
- Front & Rear Electric Jacks
- 30 Amp Power Cord
- Power Tongue Jack
- Aluminum Rims
- LP Quick Connect
- Exterior Grab Handle
- Friction Hinge Entry Door
- Outside Shower
- Black Tank Flush

INTERIOR (Light Models Only)

- 60" x 80" Residential Queen Bed
- Upgraded Beauflor Lino
- Dual Row LED Interior Lighting
- Seamless Kitchen Countertops
- Foot Flush Toilet
- WiFi Prep
- 13,500-BTU Ducted Air
- 3 Burner Range w/Oven and Glass Cover
- 6 Gal. Gas/Electric Water Heater w/DSI
- High Output Furnace
- Large Single Bowl Farm Sink w/High Rise Faucet
- Range Hood w/Light and Exhaust Fan
- Pleated Night Shades – Living Area and Bedroom
- Glass Fireplace w/5K BTU Heater
- 32" LED TV



LIGHT LX SERIES



LIGHT LX 1855RB
Length: 22'11" Weight: 4,097 lbs. Sleeps: 2-3
Hitch: 743 lbs. Height: 10'7"



LIGHT LX 1905BH
Length: TBD Weight: TBD Sleeps: TBD
Hitch: TBD Height: TBD



LIGHT LX 2125BH
Length: 28' 5" Weight: 4,468 lbs. Sleeps: 2-3
Hitch: 552 lbs. Height: 10'3"

*All information & specifications are for units manufactured after 11/01/2020



Light
SERIES

No matter where or why you travel, there's always something to be found, so why not get the most out of every camping experience. Coleman branded floorplans are loaded with added value and innovative features yet light on weight.

2755BH



2455BH



2455BH

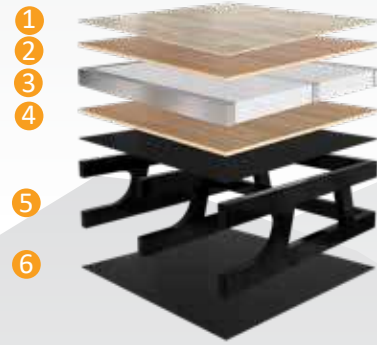


Legendary Innovation. Trailblazing Value.

DUTCHMEN® CONSTRUCTION ADVANTAGE

Floor Structure

- 1 Linoleum Flooring
- 2 Luan Interior Panel
- 3 Aluminum Frame with Block Foam Insulation
- 4 Darco Moisture Barrier
- 5 Steel powder coated Main Frame
- 6 Fully Enclosed Underbelly



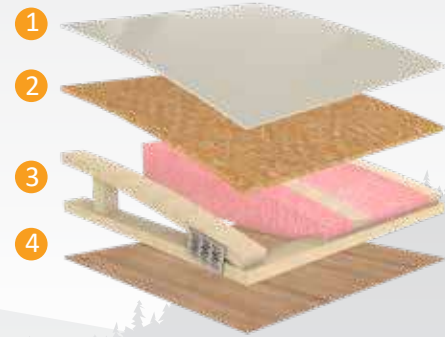
Laminated Walls

- 1 Fiberglass Exterior Panel
- 2 Luan Wall Backing
- 3 Aluminum Frame with Block Foam Insulation
- 4 Luan Interior Wall Panel



Durable Roof Structure

- 1 TPO Roof
- 2 3/8" Decking
- 3 Fiberglass Insulation
- 4 Luan Interior Panel



MORE STANDARD FEATURES MORE VALUE

Dutchmen RVs turn more heads on the lot and in the campground than any other. Why? While other manufacturers offer features as options, Dutchmen tends to make those same features standard. Call it "bang for the buck," "more for your money," or simply "more value." **We've built a reputation for bringing RV owners more standard features for less money** for more than 25 years . . . and it's a reputation we plan to keep.



100% PRE-DELIVERY INSPECTION

At Dutchmen, quality is standard. Every single Dutchmen RV that comes off the line receives it's own pre-delivery inspection. Every unit undergoes a thorough 253-point check to ensure accurate measurements, fully-functional electronics and components.



THE INDUSTRY'S BEST RV WARRANTY

With this industry-best warranty, we take the guessing game out of what is and isn't covered. So, that means you don't have to wrangle over the details, because we deliver value by clearly outlining the major components we back during the first three years.



THE LEADER IN PARTS AND SERVICE

Replacement parts. Routine checkups. Expert advice. You name it and we've got it covered. When only the best RV services will suffice, our industry-leading parts and service department is ready to help you get back on the road - and stay there longer than ever before.



Light
SERIES



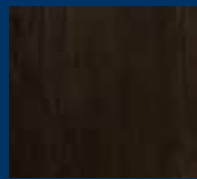
Interior Decor



Ironwood



Maryland
Flooring



Roman Maple
Cabinets



Arabesque Crystal
Countertops

Your Dealer

PO BOX 2000 | 2164 CARAGANA COURT | GOSHEN, IN 46527 | SALES 574.537.0600

www.dutchmen.com

Visit us online to see all the Dutchmen brands, innovative models and spacious floor plans.



*Length is defined as the distance from the centerline of hitch pin/coupler to rear bumper of trailer. **Our weights represent how most units are built, inclusive of many commonly-ordered options. ***Fresh water capacity includes water heater capacity.

DISCLAIMER: Product information is as accurate as possible as of the date of brochure publication. All features, floor plans and specifications in this brochure are subject to change without notice. Please consult Dutchmen's website at www.Dutchmen.com for current product information and specifications. Tow Vehicle Disclaimer. CAUTION: Owners of Dutchmen recreational vehicles are solely responsible for the selection and proper use of tow vehicles. All customers should consult with a motor vehicle manufacturer or their dealer concerning the purchase and use of suitable tow vehicles for Dutchmen products. Dutchmen disclaims any liability or damages suffered as a result of the selection, operation, use or misuse of a tow vehicle. DUTCHMEN'S LIMITED WARRANTY DOES NOT COVER DAMAGE TO THE RECREATIONAL VEHICLE OR THE TOW VEHICLE AS A RESULT OF THE SELECTION, OPERATION, USE OR MISUSE OF THE TOW VEHICLE. REFERENCE DUTCHMEN MANUFACTURING OWNERS MANUAL FOR LIMITED WARRANTY DETAILS. © 2020 Dutchmen 11-01-2020-Coleman Light -Printed in U.S.A.

Travel Trailers

INCLUDING THE
COLEMAN LIGHT

LX SERIES



Dutchmen®

To learn more visit our website dutchmen.com